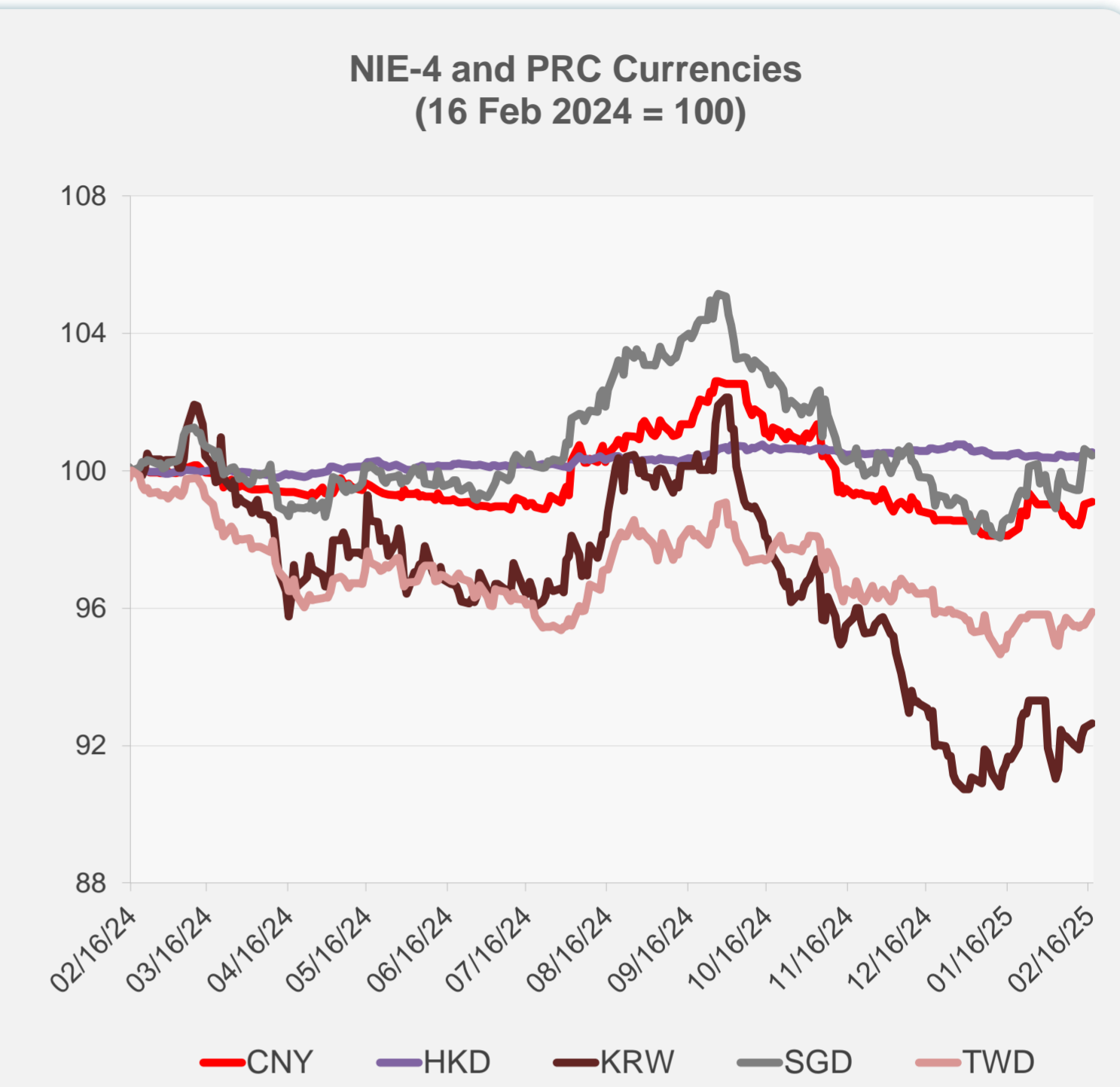
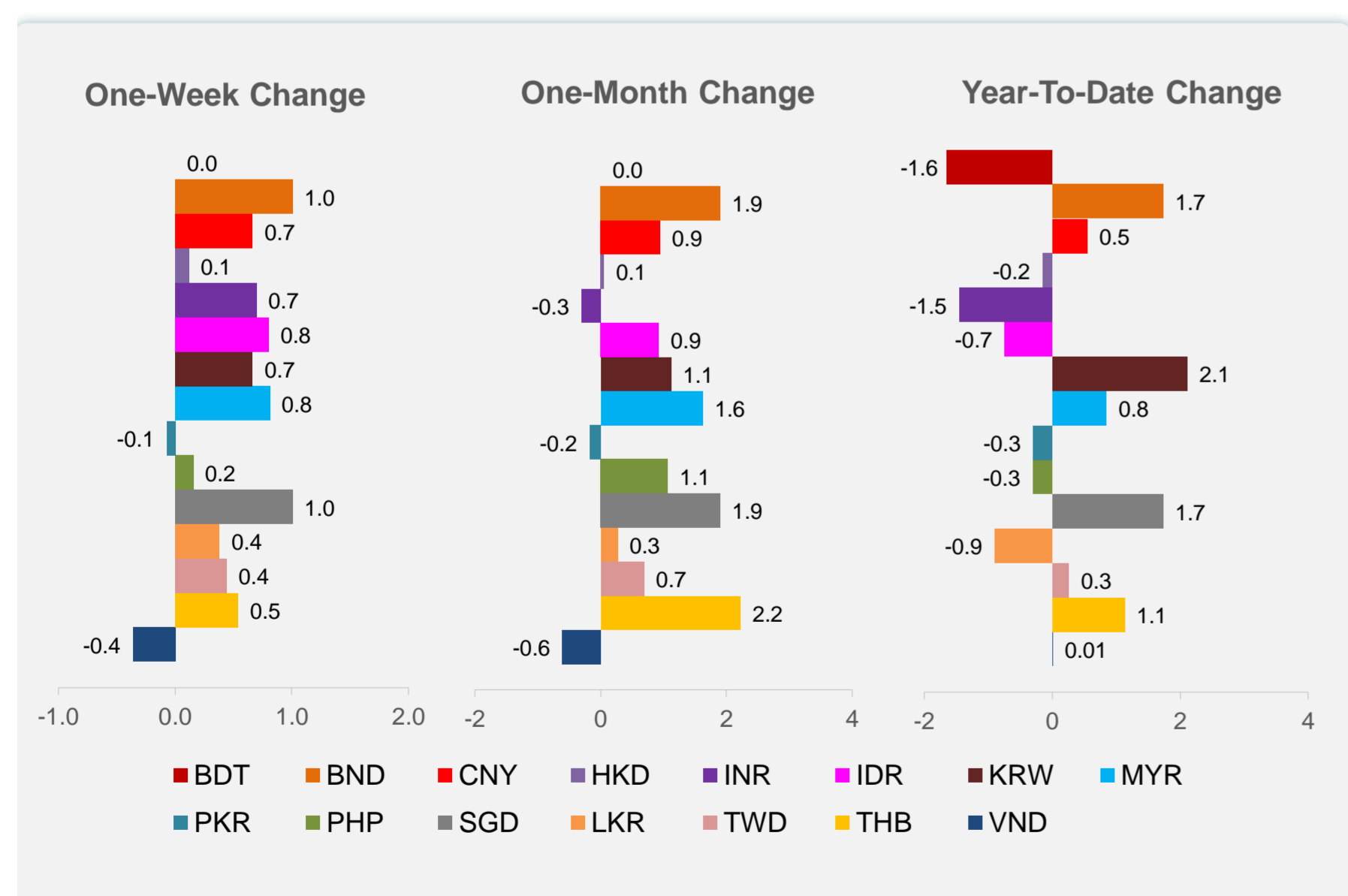
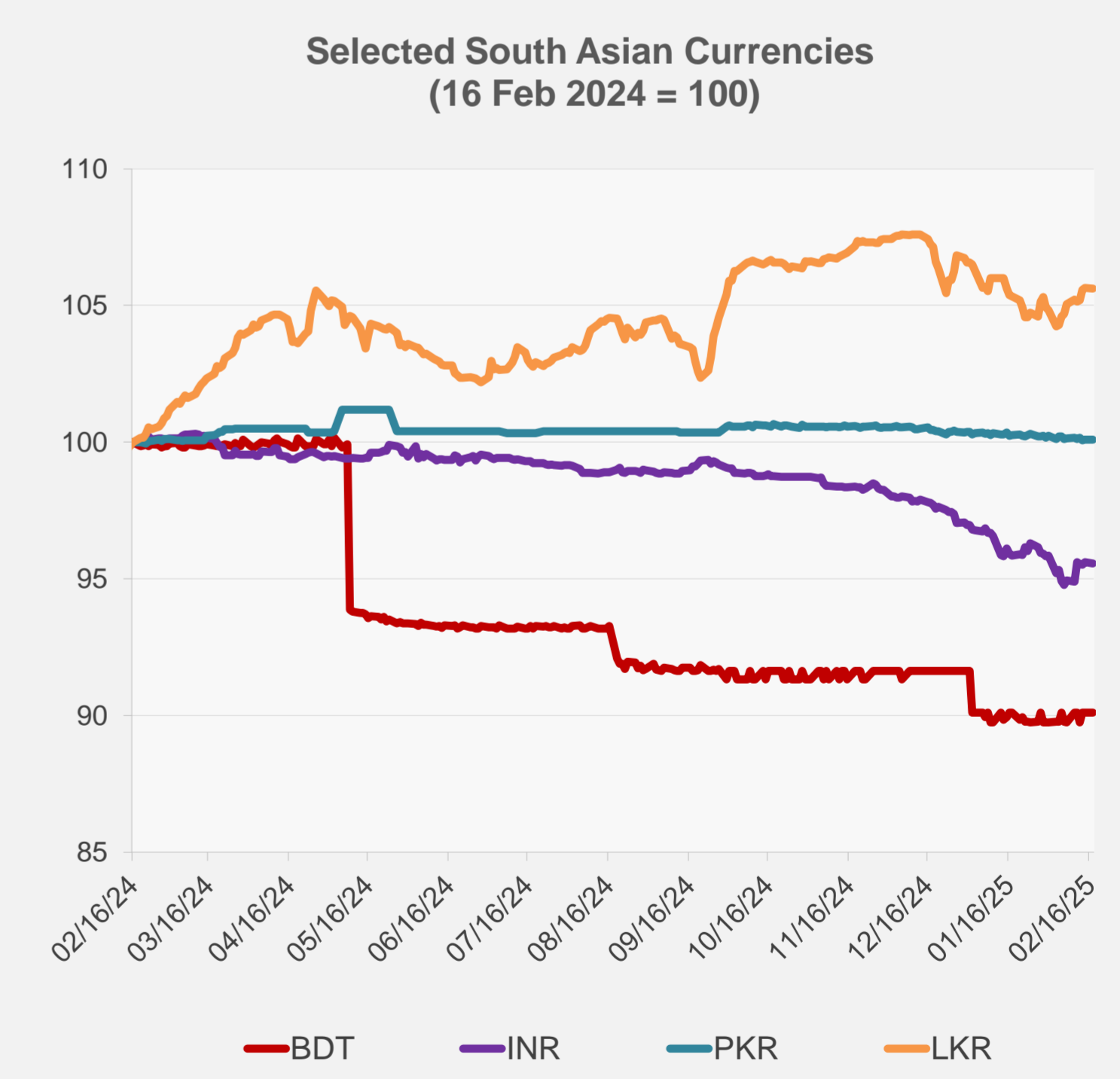
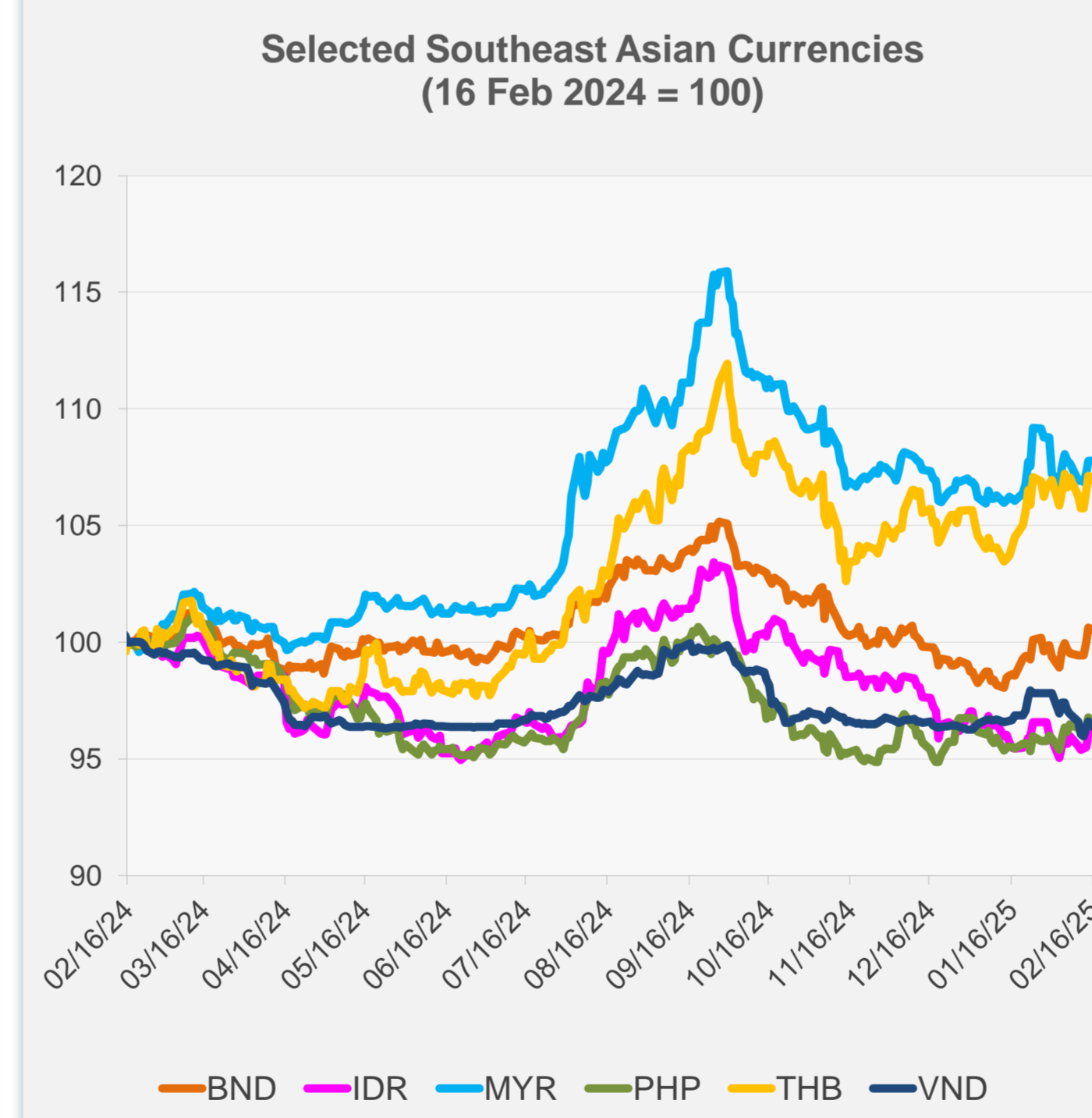


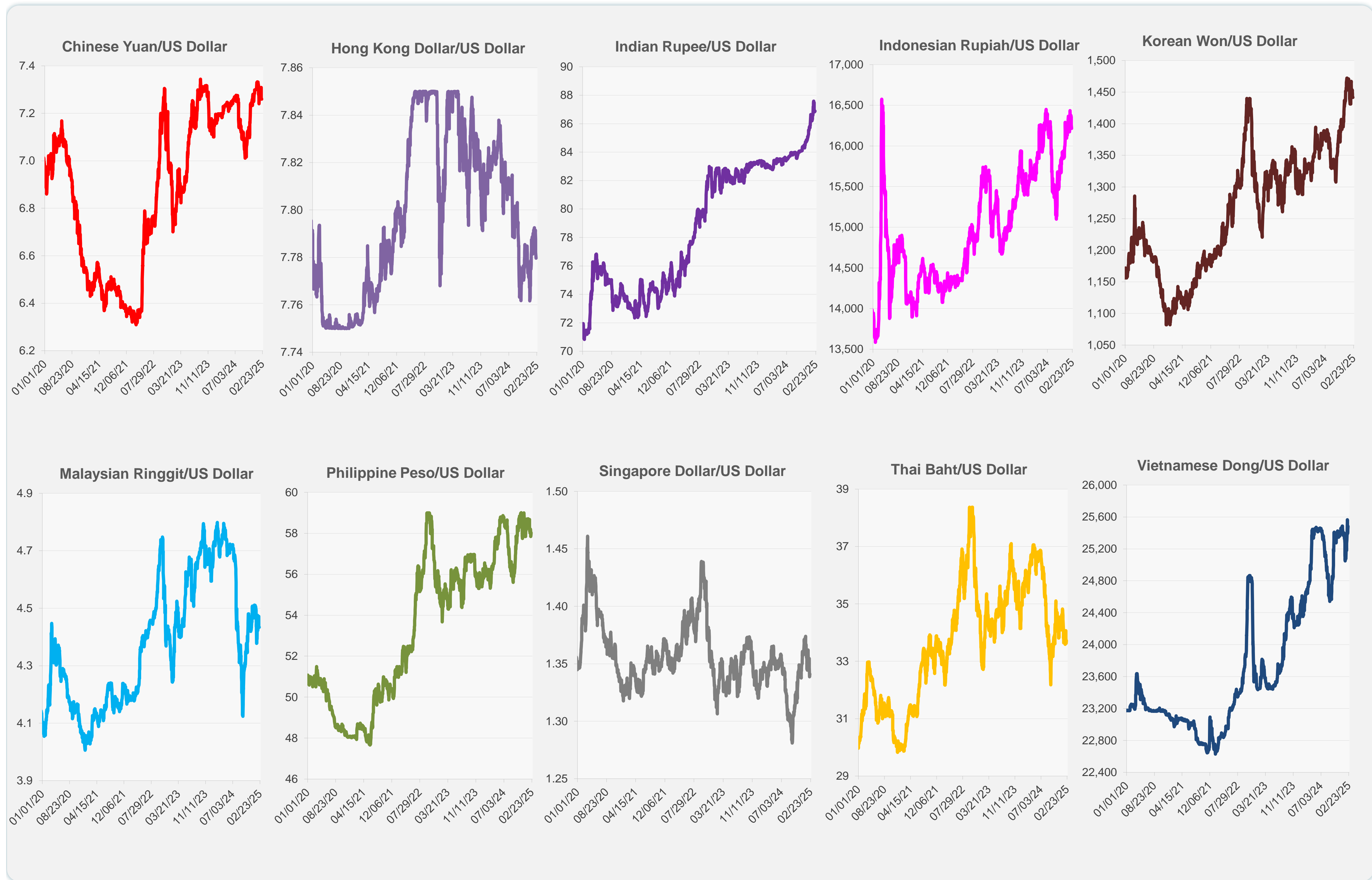
	Latest Closing	% change from Previous Day	% change from 01-Jan-25
Euro	0.95	-0.27	1.21
Japanese yen (JPY)	151.37	0.53	3.83
Bangladeshi taka (BDT)	121.50	0.00	-1.65
Brunei dollar (BND)	1.34	-0.18	1.73
Chinese yuan (CNY)	7.26	0.07	0.55
Hong Kong dollar (HKD)	7.78	0.03	-0.15
Indian rupee (INR)	86.88	-0.05	-1.45
Indonesian rupiah (IDR)	16,215.00	0.28	-0.74
Korean won (KRW)	1,441.70	0.13	2.11
Malaysian ringgit (MYR)	4.43	0.02	0.85
Pakistan rupee (PKR)	279.20	-0.02	-0.30
Philippine peso (PHP)	58.02	-0.32	-0.30
Singapore dollar (SGD)	1.34	-0.18	1.73
Sri Lanka rupee (LKR)	295.65	-0.03	-0.90
Taipei,China NT dollar (TWD)	32.70	0.40	0.26
Thai baht (THB)	33.72	-0.28	1.13
Vietnamese dong (VND)	25,482.50	-0.36	0.01



NIE = Newly Industrialized Economies



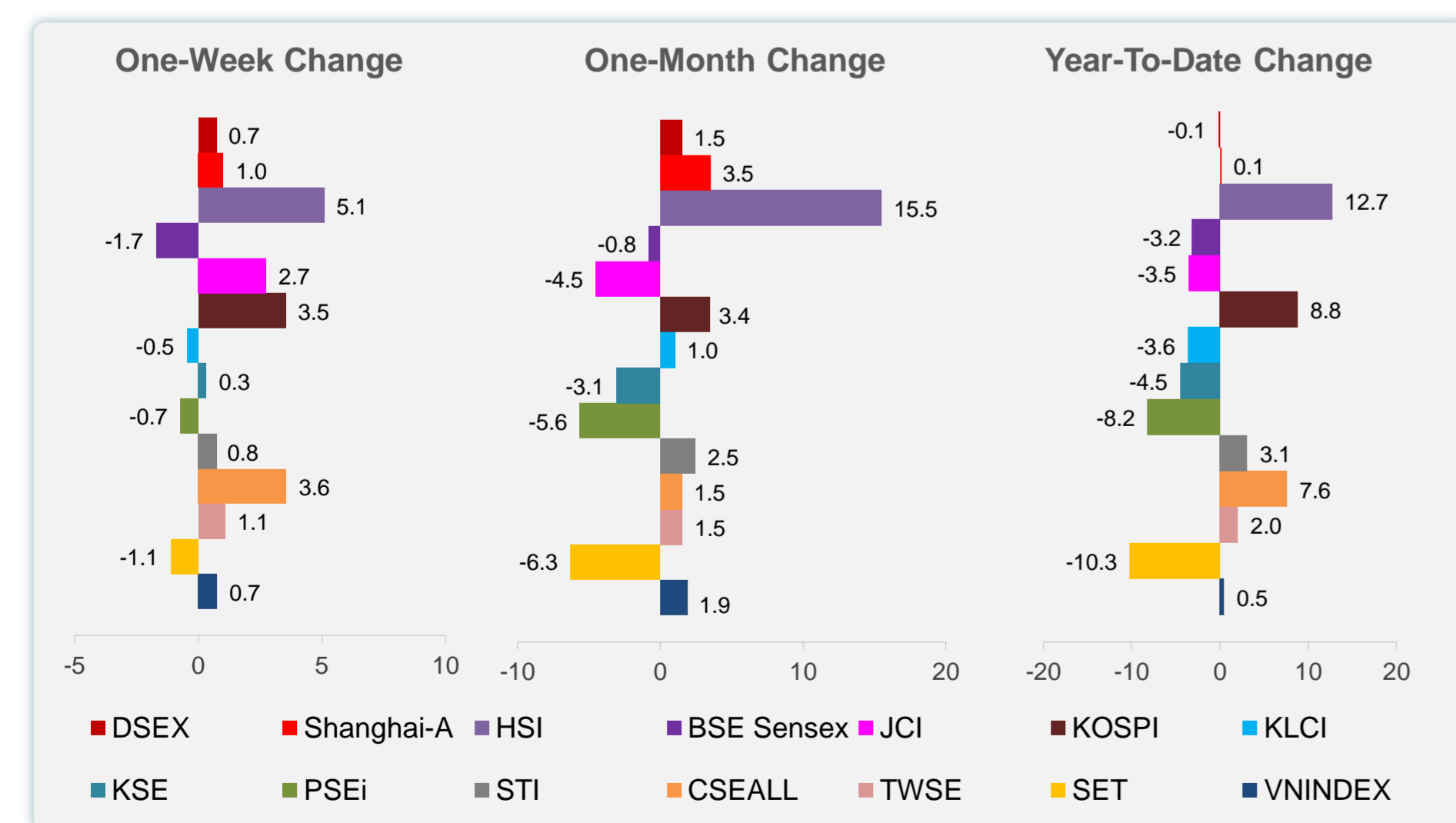
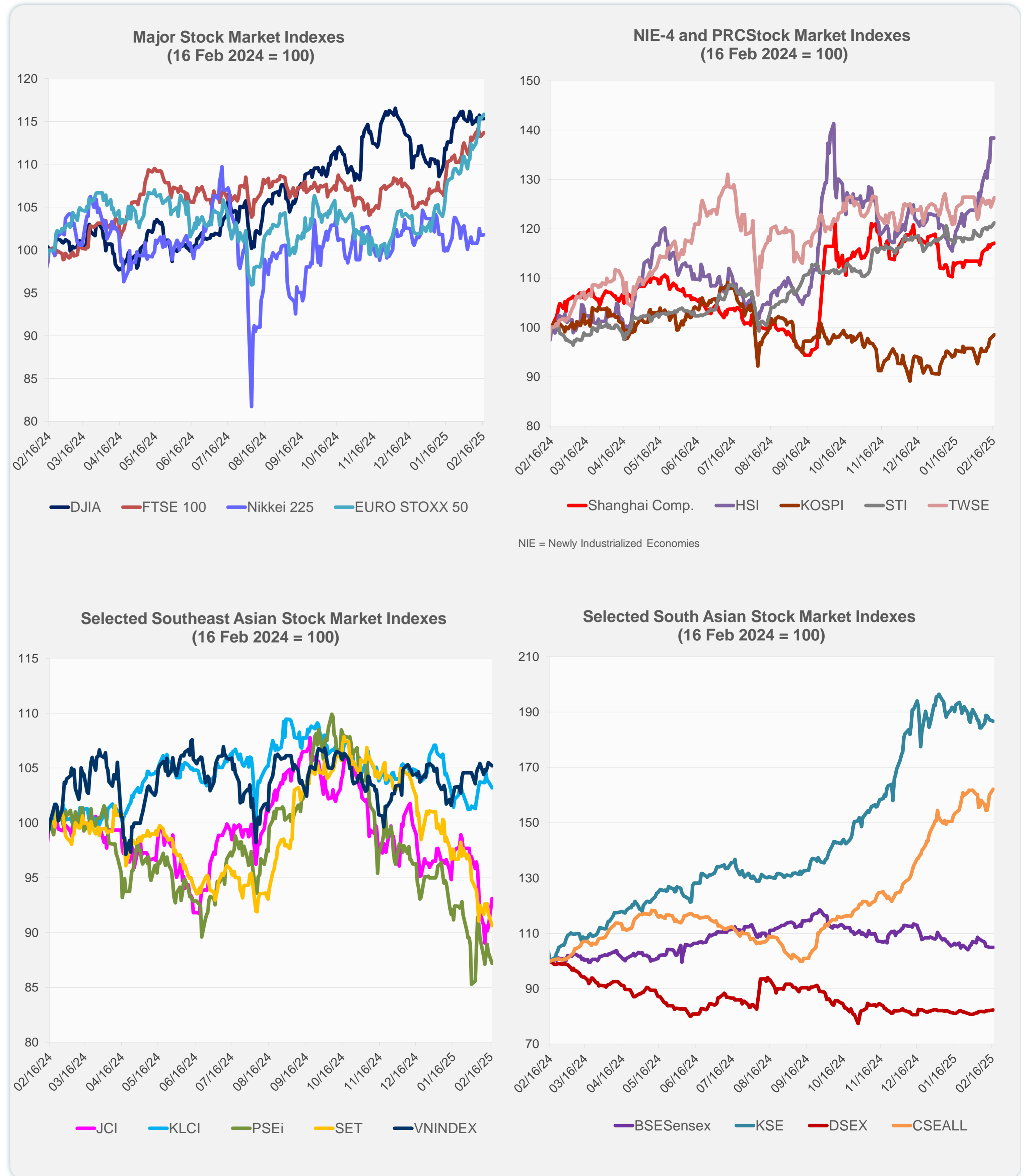
Note: Negative/Decreasing values indicate depreciation of local currency, and positive/increasing values indicate appreciation.
Source: ADB calculations using data from Haver Analytics.



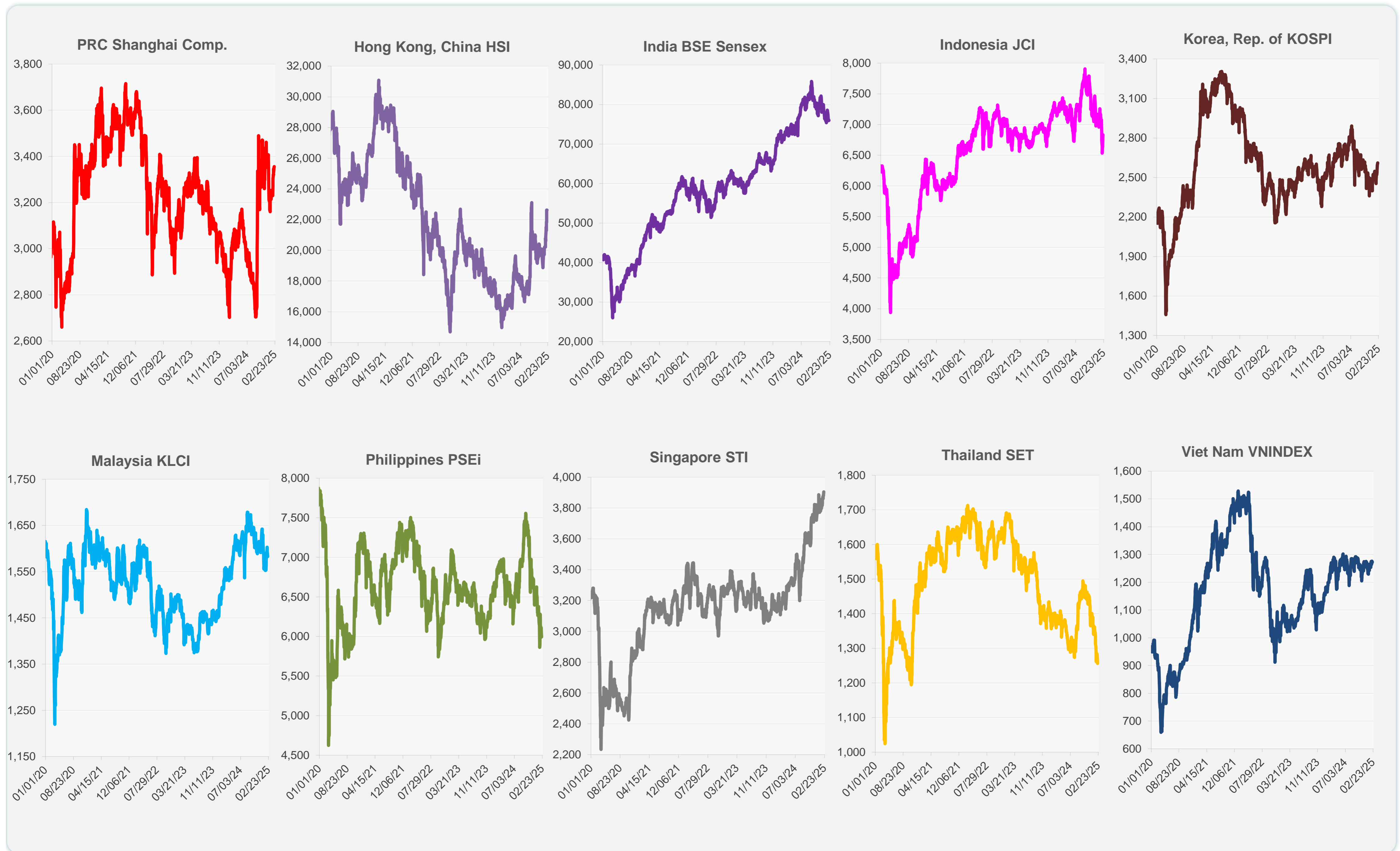
Source: Haver Analytics.

Daily Market Watch
STOCK INDEXES

	Latest Closing	% change from Previous Day	% change from 01-Jan-25
US Dow Jones Ind Avg	44,546.08	0.00	4.71
US NASDAQ	20,026.77	0.00	3.71
US S&P 500	6,114.63	0.00	3.96
UK FTSE 100	8,768.01	0.41	7.28
EURO STOXX 50	5,519.83	0.48	12.74
Japan NIKKEI 225	39,174.25	0.06	-1.81
Bangladesh DSEX	5,211.53	0.19	-0.13
PRC Shanghai Comp.	3,355.83	0.27	0.12
Hong Kong, China HSI	22,616.23	-0.02	12.74
India BSE Sensex	75,996.86	0.08	-3.20
Indonesia JCI	6,830.88	2.90	-3.52
Korea, Rep. of KOSPI	2,610.42	0.75	8.79
Malaysia KLCI	1,582.76	-0.56	-3.63
Pakistan KSE 100	111,743.53	-0.30	-4.50
Philippines PSEi	5,993.48	-1.12	-8.20
Singapore STI	3,904.85	0.71	3.10
Sri Lanka CSEALL	17,156.05	1.30	7.60
Taipei, China TWSE	23,505.33	1.52	2.04
Thailand SET	1,256.48	-1.23	-10.26
Viet Nam VNINDEX	1,272.72	-0.26	0.47



Sources: ADB calculations using data from CEIC Data Company and Haver Analytics.

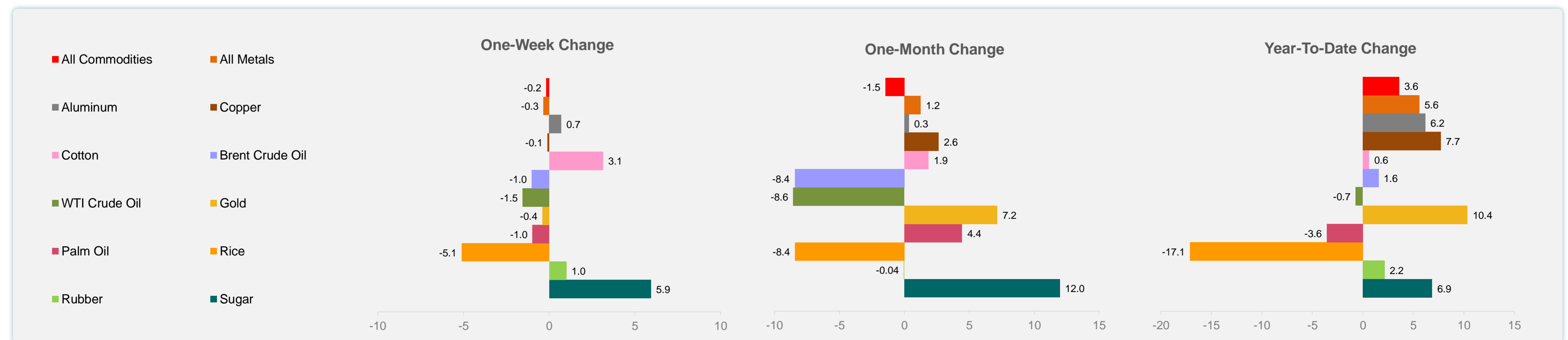
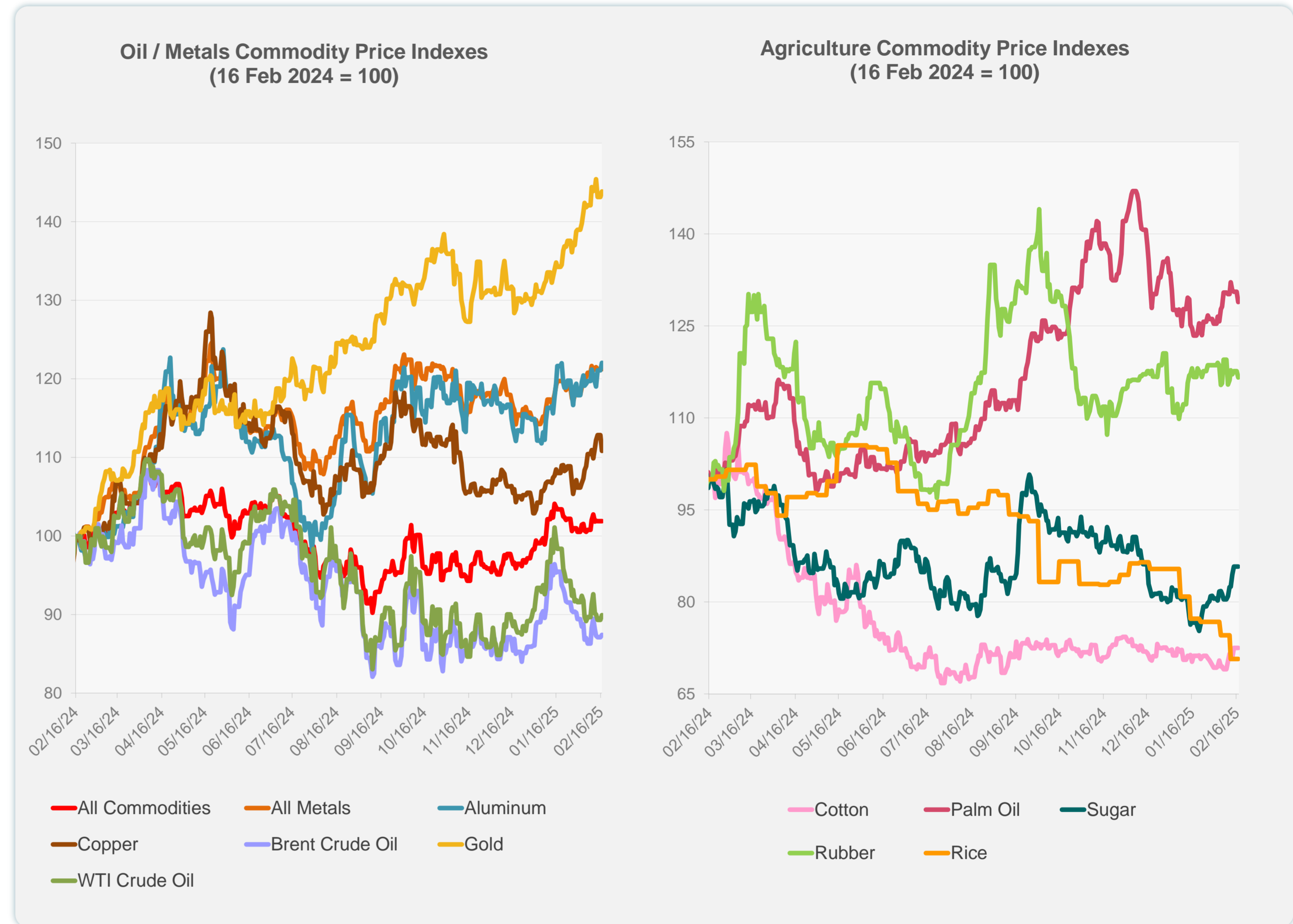


Sources: CEIC Data Company and Haver Analytics.

Daily Market Watch
COMMODITY PRICES

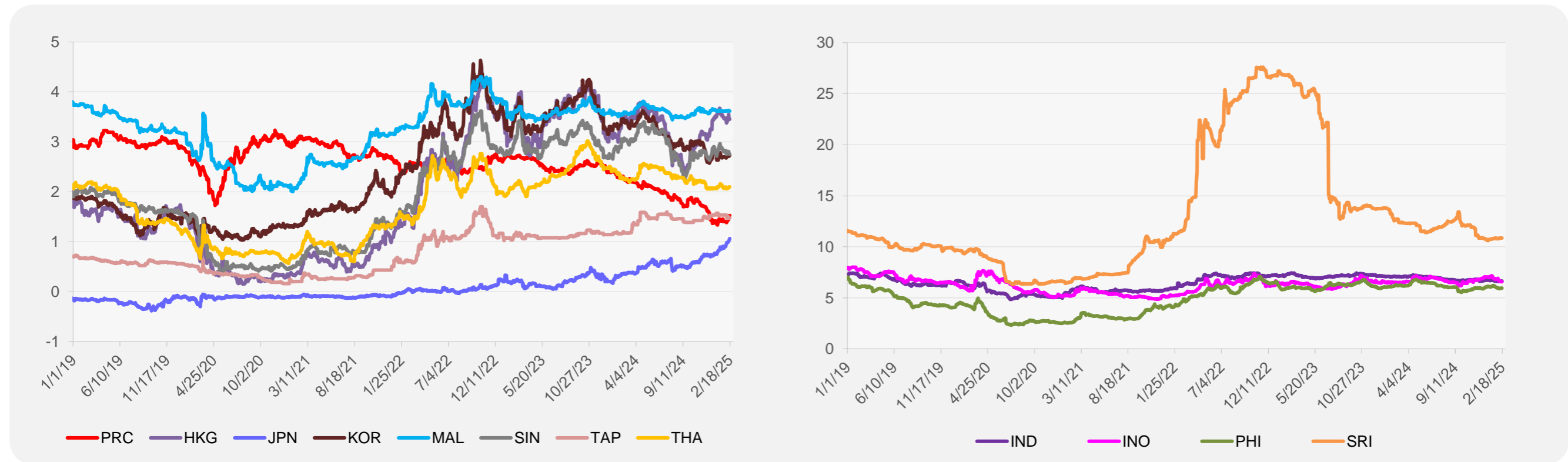
	Unit	Latest Closing	% change from Previous Day	% change from 01-Jan-25
S&P All Commodities	US\$	569.43	0.00	3.60
S&P All Metals	US\$	324.59	0.00	5.60
Aluminum	US\$/metric ton	2,683.37	0.77	6.20
Copper	US\$/metric ton	9,321.00	-1.79	7.72
Cotton	US cents/lb	66.31	0.00	0.62
Brent Crude Oil	US\$/barrel	75.27	0.35	1.57
WTI Crude Oil	US\$/barrel	71.20	0.65	-0.73
Gold	US\$/troy oz	2,896.56	0.49	10.37
Palm Oil	US\$/metric tonne	1,060.83	-1.25	-3.57
Rice ¹	US\$/metric ton	445.00	0.00	-17.13
Rubber ²	US\$/kg	241.90	-0.86	2.15
Sugar	US cents/lb	19.45	0.00	6.87

¹ Latest closing price from 22 January 2025.
² Singapore Exchange, Ribbed Smoked Sheet Rubber.

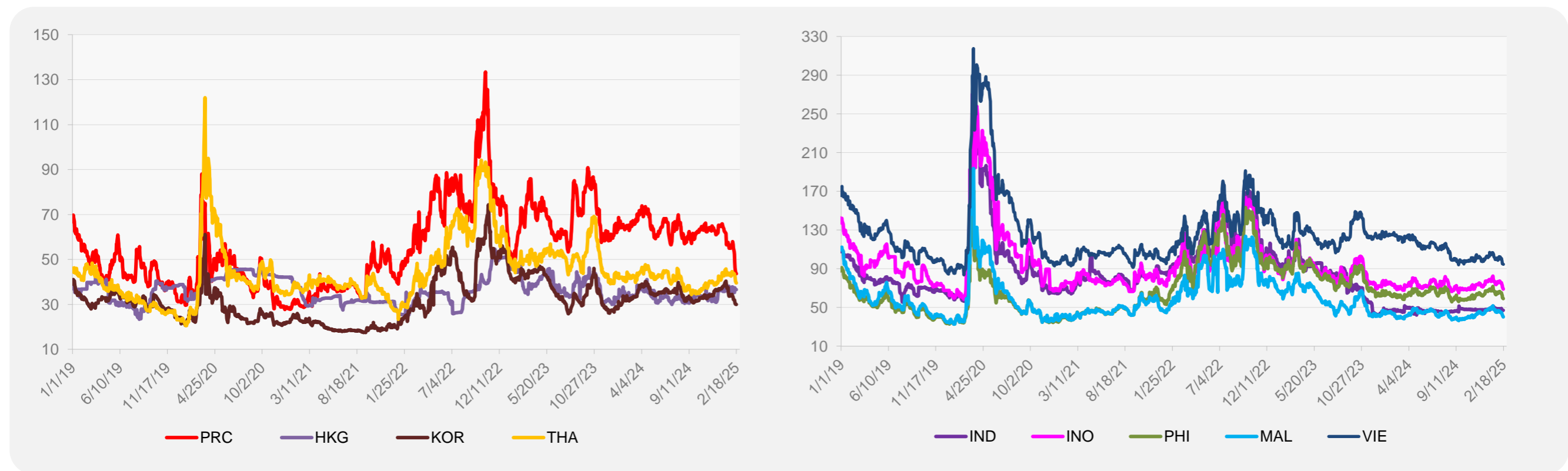


Source: ADB calculations using data from Bloomberg.

5-YEAR LOCAL CURRENCY GOVERNMENT BOND YIELDS (%)



5-YEAR CREDIT DEFAULT SWAP¹



¹ In USD and based on sovereign bonds.
Source: ADB calculations using data from Bloomberg.